

Instructions: Please note; instructions are intended to guide the installation of Angular Series channels, lights, and lenses. It is recommended that all hardwired electrical work be completed by licensed and experienced professionals.

Materials:

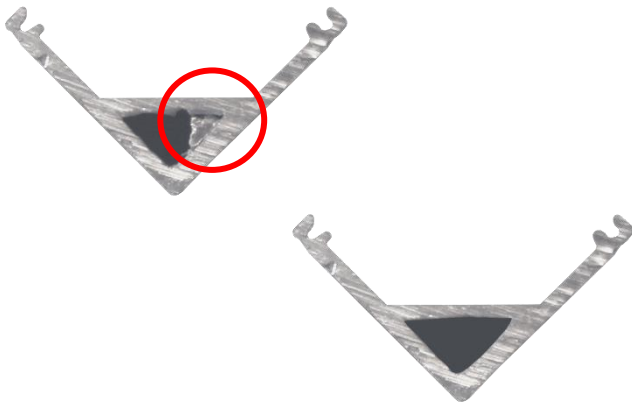
- Measuring Tape
- Sharp diamond blade saw
- Razor blade
- Steel wool
- Scissors
- Wire Strippers
- Phillip’s head screw driver or drill for installation
- Corner Channel
- Corner Lens
- Corner End Caps (2 each)
- Corner Mounting Clips
- 12V or 24V Flexible LED strips in desired color (1 per panel)
- Micro-Lock Tiger Paws® (one for each strip of LEDs)
- 18-22AWG cable
- 12V or 24V DC Power Supply



Step 1: To build, begin by measuring available space for completed corner panel.



Step 2: Cut corner channel to length using sharp diamond blade saw.



Step 3: Use razor blade and steel wool to remove any barbs or metal frays from the ends of the channel, as these will prevent end caps from being secured in step 11.

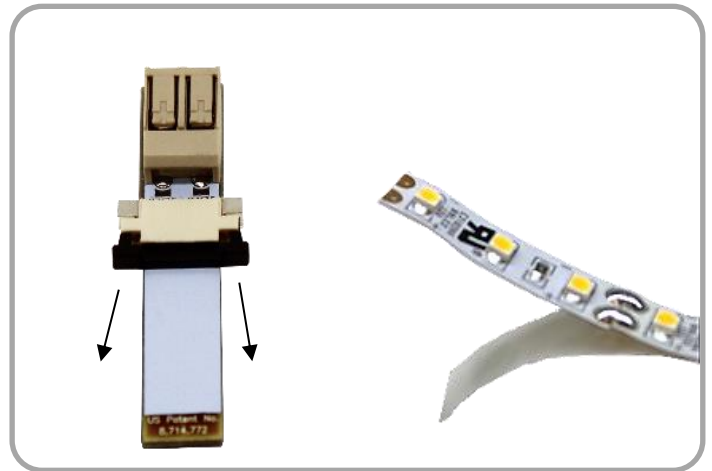


Step 4: Measure and cut lens to length using sharp diamond blade saw. To avoid cracking, do not cut using dikes or tin snips.

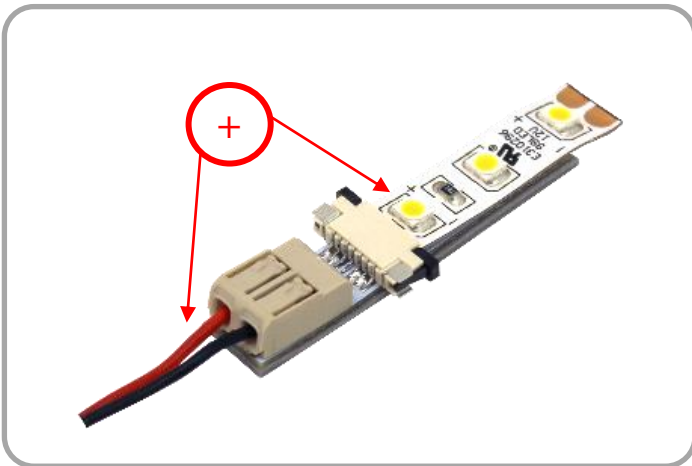




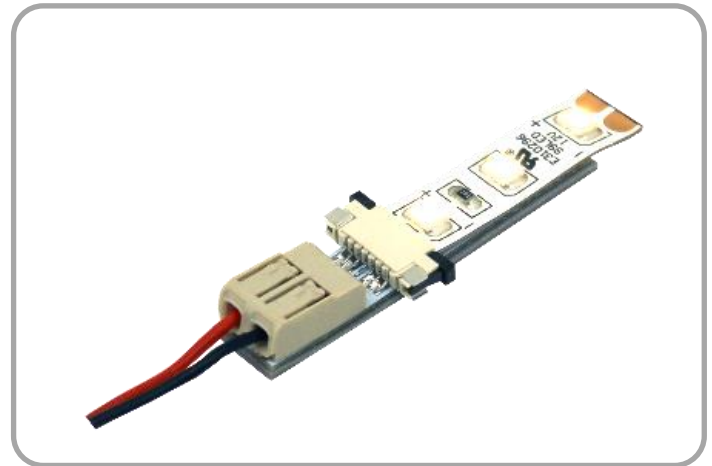
Step 5: If using pre-cut LED strips with direct-solder leads, skip to step 9. If modifying, use scissors to cut LEDs to length along copper pads.



Step 6: Peel back adhesive about ½ an inch and pull open black latch on Micro-Lock. Insert LED flex between black latch and beige bridge connector, then slide latch firmly closed.



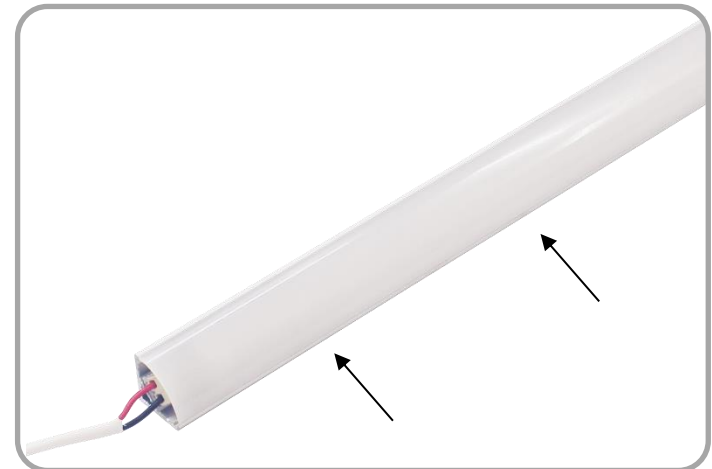
Step 7: Identify the polarity as marked along the strip to determine polarity of wiring. Strip back wire about ¼ inch and insert into Micro-Lock. *(Positive wire aligns with (+) side of LED flex strip.)*



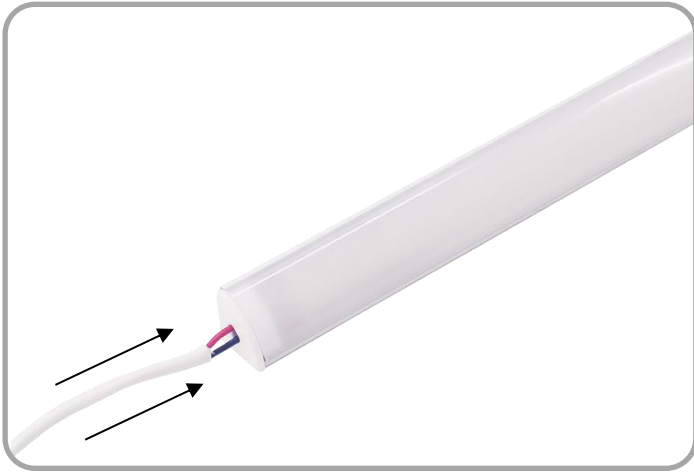
Step 8: Use compatible power source to test functionality. If lights do not turn on, double check polarities are properly matched. Repeat steps 4-8 to add connector to opposite side of flex.



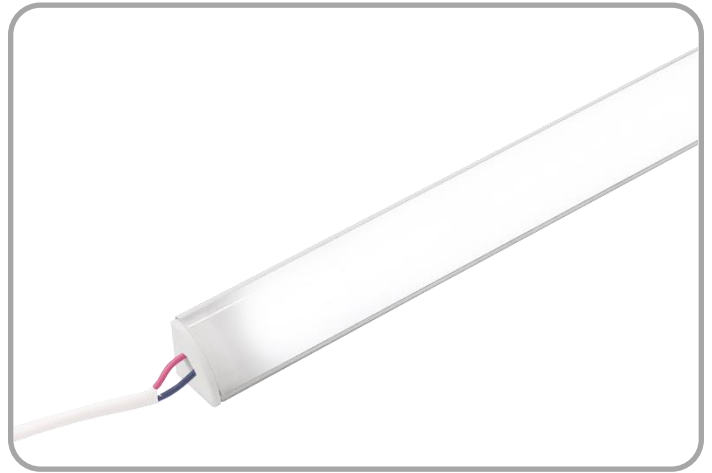
Step 9: Remove adhesive backing from LED strip and connectors. Carefully align with end of aluminum channel and adhere strip along the center.



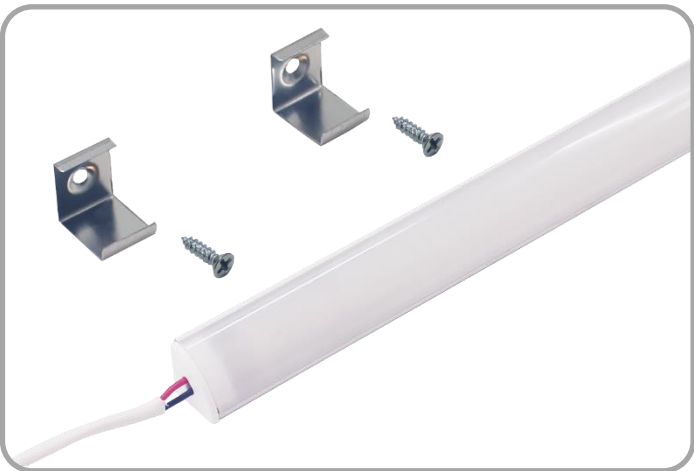
Step 10: Starting from bottom edge, align lens with aluminum channel. Then putting gentle pressure along the top edge, press into place.



Step 11: Slide end caps over wire and secure firmly in place. Difficulty in this step may be caused by barbs or frays left over from cutting channel. See step 3.



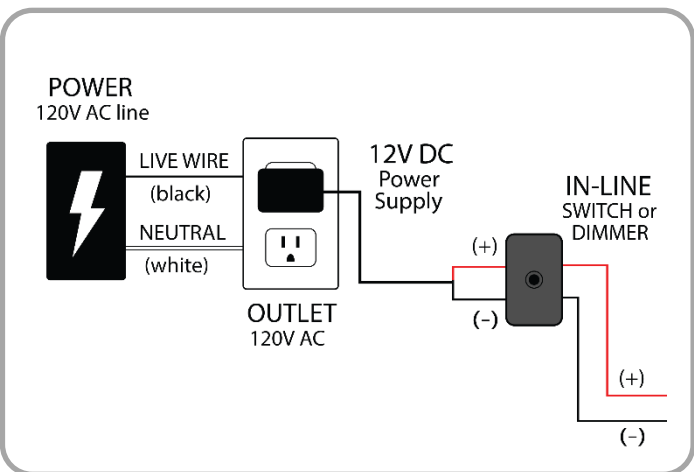
Step 12: Connect to compatible power source to test functionality before proceeding to mount light panel in next step.



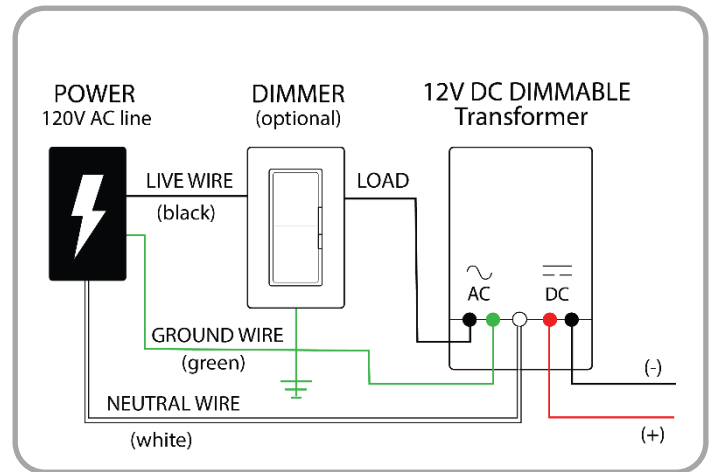
Step 13: To install, secure mounting clips onto desired surface, measuring every 12" or so to provide support along the length of panel.



Step 14: Snap panel into place using mounting clips, then reconnect to power source.



Plug-in System: Follow corresponding product instructions to connect panels to in-line accessories and plug-in power supplies.



Hardwire System: Follow corresponding product instructions to connect to dimmable wall-switch and hardwire transformers.

OR

